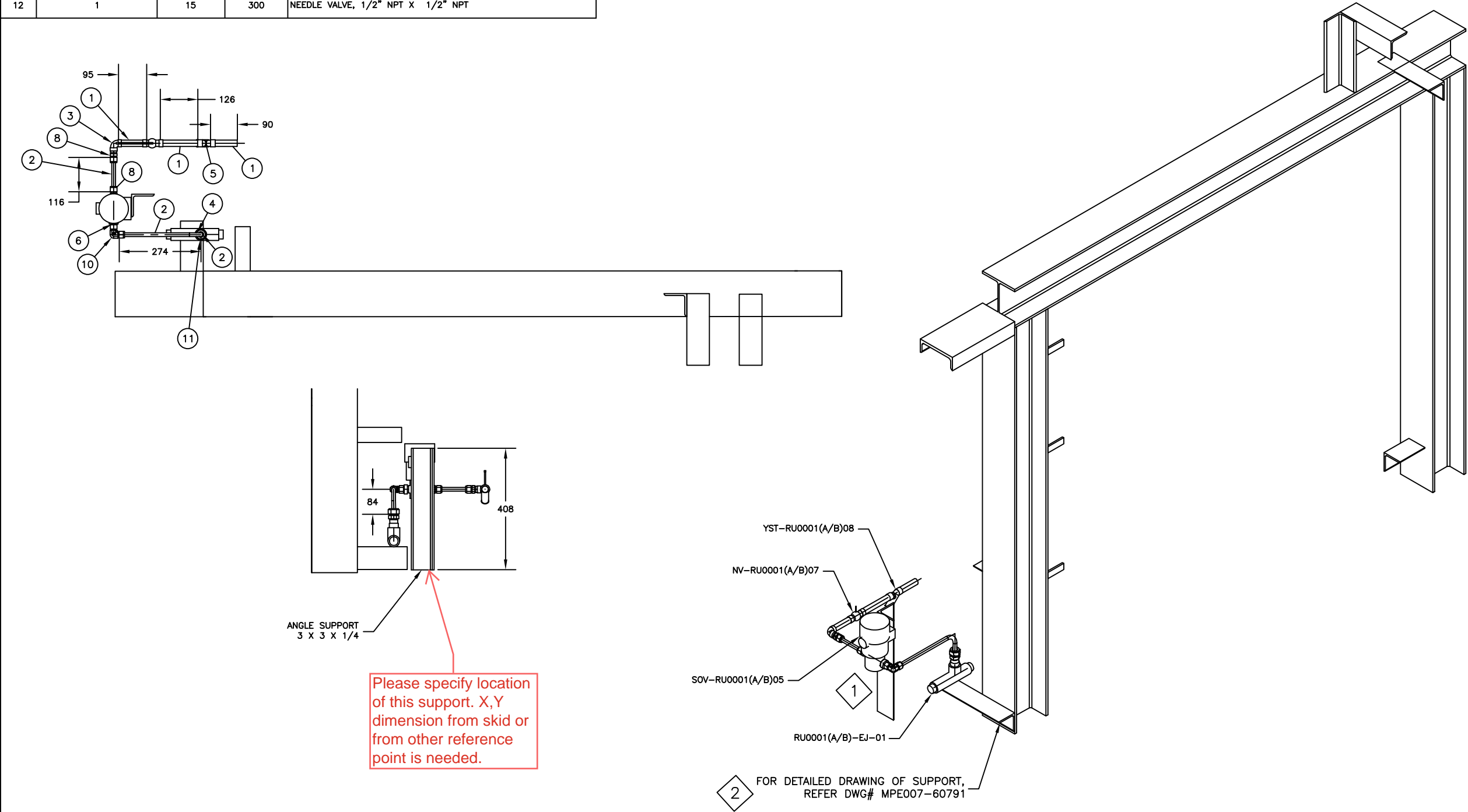


BILL OF MATERIALS				
ID	QTY	ND	SCH/CLASS	DESCRIPTION
1	325 MM	15	80	PIPE, SEAMLESS, SCH80, PE, ASME B36.10, ASTM A333 Gr 6
2	500 MM	15		TUBING, ASTM A269, SEAMLESS – 316SS
3	1	15	3000	ELL 90, 3000 LB, SW, ASME B16.11, ASTM A350 Gr LF2
4	1	15		BEND 90 5R, TUBING, ASTM A269, 316SS
5	1	15	300	Y-Type Strainer, FPT, 300 LB, ASME B16.10
6	1	15		MaleStub1/2NPT(M) x 1/2"Tube
7	1	15		EJECTOR, 1/2" NPT X 1/2" NPT X 1/2" NPT
8	2	15		Male Connector 1/2 NPT x 1/2 T
9	1	15		SOLENOID VALVE 1/2" NPT(F)
10	1	15		Female Union Elbow 1/2" T x 1/2"T
11	1	20x15		Male Connector 1/2 NPT x 1/2 T
12	1	15	300	NEEDLE VALVE, 1/2" NPT X 1/2" NPT



- NOTES:
1. ALL TAGS ARE LABELED AS FOLLOWS,
PIT-RU0001(A/B)-01 WHERE 'A' STANDS FOR UNIT 1 &
'B' STANDS FOR UNIT 2.
- FOR EXAMPLE:
- PIT-RU0001A-01 FOR UNIT 1
- PIT-RU0001B-01 FOR UNIT 2

0	F	19.08.24	FOR APPROVAL	AJD	AJD	IES	SES
REV.	STATUS	DATE	PURPOSE OF ISSUE	PREP.	CHKD.	APPD.	AUTH.
CLIENT: SERVICE: LOCATION: UNIT TAG NO.:		ENER TECHNOLOG PROPANE REFRIGERATION PACKAGE IRAQ RU-0001 A/B					
VENDOR LOGO							
Contract No.		P.O. No. ENER-MME-2024-100-001			SCALE		
DRAWING TITLE: CHILLER OIL RECOVERY HOOKUP DRAWING							
DRAWING NO. MPE007- T0675-A				REV.	SHEET No.	SIZE	
				0	1 OF 1	D	